

CANAL CENTRAL
BUSINESS BAY

Central
Hotels





Absorb the inspiring beauty of luxurious contemporary design and seamless detail, enhanced by genuine hospitality and personalized service in Canal Central at Business Bay. With spectacular views of the city, Dubai Canal, and The Burj Khalifa, enjoy a range of exceptional business and leisure options while staying with us.

Even when travelling for business, your stay with us will make you feel at home as you enjoy spacious rooms designed with your comfort in mind. Unwind in one of the 278 modern designed rooms and suites while you are surrounded by unique venues that make business travel a delight.

In your free time, take a dip in the pool, work out at the Gym and complement it with a relaxing treatment at Wellness Valley Spa. After a long day, it is only right that you get the unique dining and lounging experience that you deserve, and our uniquely selected restaurants and bars provide just that.

SPECTACULAR VIEWS OF THE DUBAI CANAL AND BURJ KHALIFA



ROOMS AND SUITES



Superior Room

- Choice of King size bed or twin beds.
- City View with a glimpse of Business Bay.

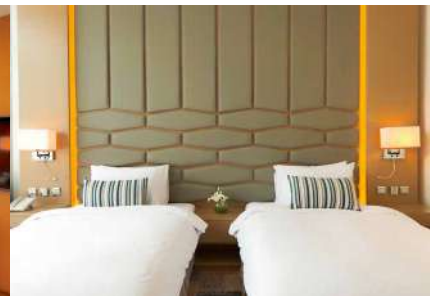


Deluxe Room

- Choice of King size bed or twin beds.
- Views of the Dubai Canal and the city.

Premium Room

- Choice of King size bed or twin beds.
- Direct uninterrupted views of the Burj Khalifa, Dubai Canal, and Business Bay.



Bay Suite

- Choice of King size bed or twin beds.
- One Bedroom Suite with a generous living area.
- Amazing views of the Burj Khalifa and the City.

INFINITY POOL



Unique to Canal Central, our Infinity Pool gives our guests unhindered views of the iconic Burj Khalifa and the Dubai Canal while unwinding at the outdoor pool. Open from 07:00 to 19:00.



RESTAURANTS AND BARS



Lilly's Social House - Experience New Orleans with live soulful jazz and blues every night. The menu delights with much-loved Creole-influenced classics, and crafty cocktails, served in stunning décor that exudes warmth and a welcoming dusky charm. Open from 12:00 to 01:00



Lilly's Backyard - Enjoy sweeping views of the Dubai skyline and uninterrupted view of Burj Khalifa. Set in a gorgeous outdoor garden space, Lilly's Backyard is the perfect place to unwind and enjoy a chilled drink. Open from 12:00 to 01:00



Barista's Corner - The specialty coffee company and coffeehouses were a result of having to chase a consistently exceptional cup of coffee that remained elusive. Open from 07:00 to 23:00



La Cruise - All-day dining restaurant and terrace that combines contemporary interiors with a supreme culinary experience. Breakfast: 06:30 - 10:30
Lunch: 12:30 - 16:00
Dinner: 18:30 - 22:30



In-Room Dining - Have a dining experience delivered straight to your room and choose from an extensive menu - available all day - with options that are ideal for breakfast, full course meals, snacking, or romantic private dinners.

Available 24 hours

WELLNESS VALLEY SPA



The Wellness Valley Spa offers relaxing treatments that utilize natural oils and fragrances to stimulate the senses and increase the wellbeing of mind, body and soul. Open from 11:00 to 24:00.

GYM



Stay fit and healthy while staying with us. Get active in our fully-equipped modern gym that comes with steam rooms and separate locker rooms. Open from 07:00 to 22:00.

GUEST SERVICES AND FACILITIES

Guest facilities are maintained at their best down to the last and smallest detail at Canal Central. Whether you are working out at the gym or lounging by the pool, you will discover only stellar service, great facilities, endless activities and friendly staff.

- Outdoor Swimming Pool
- Unobstructed views of the Burj Khalifa
- Footsteps away from the Dubai Canal
- State of the Art Gymnasium and Spa
- 24H Reception and Concierge
- Housekeeping Service
- Valet Parking
- Business Centre
- Travel Desk
- Hair Salon
- Meeting and Events Facilities
- Laundry, Pressing and Dry Cleaning



Reception

24Hrs Concierge

Travel Desk

Kids Area

Salon

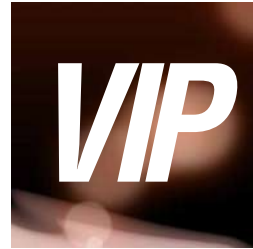
Gift Shop

IN-ROOM TABLETS



All guest rooms are installed with a customized interactive tablet that serves as a digital guest service directory. This connects you to a wide range of services such as wake-up calls, restaurant reservations, dining menus, in-room ordering, housekeeping requests, guest notifications, and guest feedbacks.

VIP DISCOUNT CARD



VIP by Central Hotels offers you an exclusive discount for room bookings, dining, and facilities while staying with us. From free room upgrades to complimentary late-checkout, the VIP program has more to offer.

MEETING ROOM

MEETING ROOM CAPACITIES		
	A	B
Cocktail	100	50
Theatre	60	24
Classroom	20	18
U-Shape	20	12
Boardroom	60	12



With Business Travel in mind, experience a selection of meeting facilities at Canal Central. From meeting rooms to intimate lounges, each space is the perfect location for corporate or social events with flexible layout options that cater to an array of requirements.

A dedicated team of event professionals are trained to ensure that every last detail is planned to perfection, enhanced by our personalized approach and hospitality.

LOCATION



Set in the city's flourishing business district, Canal Central in Business Bay is strategically surrounded by international corporate bases; within reach of the Dubai International Financial Centre (DIFC), Dubai Design District, Dubai International Convention Centre and Exhibition Halls. For the culture savvy traveller, The Dubai Mall, Burj Khalifa and Dubai Fountains are just a few minutes away.

CANAL CENTRAL HOTEL BUSINESS BAY

P.O. Box 22369, Business Bay, Dubai, United Arab Emirates

Tel: +971 4 873 2100 | Fax: +971 4 873 2101

Email: info.cc@central-hotels.com

GPS: 25° 10' 51.0694" N 55° 15' 51.0102" E

25.1808526, 55.2641695

Visit: www.central-hotels.com



#CanalCentralAE